

TEMPLE SINAI

JUNE/JULY 2026
SIVAN/TAMMUZ/AV

IKESHIER



WELCOME
RABBI JORDAN SHANER
DIRECTOR OF EDUCATION

CONGRATS TO ROB EBER
INCOMING TEMPLE SINAI PRESIDENT

CONTENTS

03

CLERGY AND STAFF

RABBI RICK RHEINS

RABBI MICHAEL SHIELDS

LISA THORNER, EXECUTIVE DIRECTOR

SLATE AND NEWLY ELECTED BOARD

RABBI JORDAN SHANER, DIRECTOR OF EDUCATION

RUTHIE LIPSHULCH, CANTORIAL SOLOIST

DEBBIE FOSTER, DIRECTOR OF ENGAGEMENT AND PROGRAMMING

MONA SPITZ, DIRECTOR OF DEVELOPMENT

SHEILA PURDIN, DIRECTOR OF EARLY CHILDHOOD EDUCATION

BRYNN TULLY, YOUTH ENGAGEMENT DIRECTOR

15

MEMBER SPOTLIGHT

JONATHAN FALK, SENIOR VICE PRESIDENT FOR CAMPUS SOLUTIONS
AT HILLEL INTERNATIONAL

17

MEET TEMPLE SINAI'S UNSUNG HEROES

20

WORSHIP & CLASSES

24

UPCOMING EVENTS

27

RECOGNITION

B'NEI MITZVAH

IN MEMORIAM

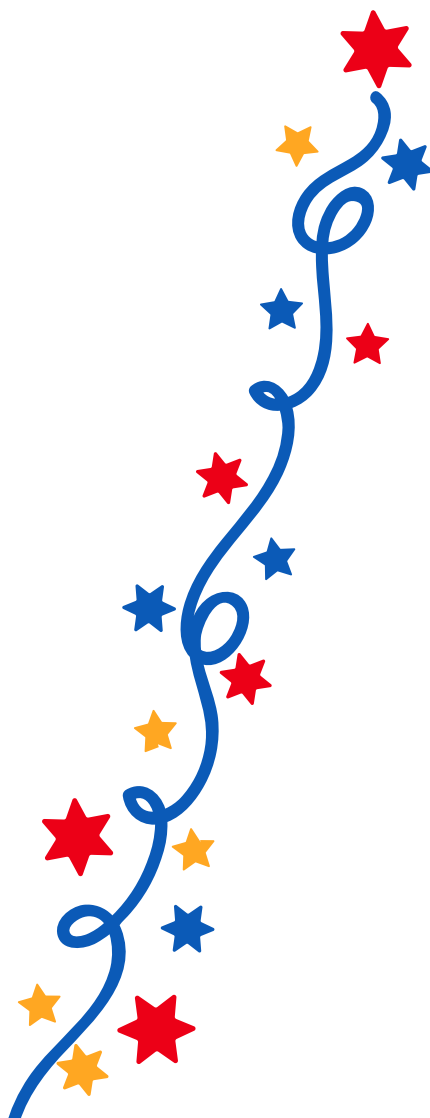
2026 GRADUATION ANNOUNCEMENTS

SCHOLARSHIPS

DONATIONS

STAFF AND BOARD

CONTACT US





BEGINNING A YEAR OF MILESTONES

RABBI RICK RHEINS

Just as some like to eat their Oreo cookies by starting with the middle-filling, so do many organizations, including Temple Sinai, begin their “fiscal” year in the middle of the calendar year.

And in keeping with the July 4 milestone celebrations of the 250th anniversary of our nation’s Declaration of Independence and the 150th birthday of the State of Colorado, Temple Sinai will be starting its 60th year!

This is also a time to express my deep appreciation to Stephanie Podolak for her three years of outstanding governance as our Temple Sinai President. Her tenure has been a time of considerable membership growth and the strengthening of our Temple resources and facility. As we all know, these past few years have been particularly trying and challenging for Jews and the Jewish community. And yet, her smart, strong, and compassionate leadership has helped to lead us so that our community is stronger than ever. I also want to thank Stephanie’s husband, Dr. Michael Podolak, and their children Katherine and William, because leading a congregation requires a great deal of support and patience from loved ones!

Following Stephanie will not be easy, but our incoming Temple Sinai President, Rob Eber, knows our community like few others. Rob’s parents were Dick and Rochelle Eber. When Rochelle died, Dick remarried, and Francis “Pinky” Eber raised Rob and his siblings Pam and Michael. The Ebers were among the first Temple Sinai members. Over the years, Rob and his wife, Dr. Leslie Eber, raised their children Iliana and Benjamin at Temple Sinai - from birth to B’nei Mitzvah, Confirmation, and now as young adults. Rob’s love of Temple Sinai and his extraordinary knowledge of our community will be key assets as he assumes the distinguished and demanding position of Temple President. We are so very fortunate!

Temple Sinai also is very lucky to begin our 60th year by welcoming back to our community Rabbi Jordan Shaner, who will be our new Director of Education! Jordan grew up at Temple Sinai! His parents, Mark and Hanna Shaner, are beloved members. For the past seven years, Jordan served as Associate Rabbi at Temple Sinai in Toronto, Canada. Now, he and his wife, Kate, a violinist and music educator, and their four-year-old son, are coming home!

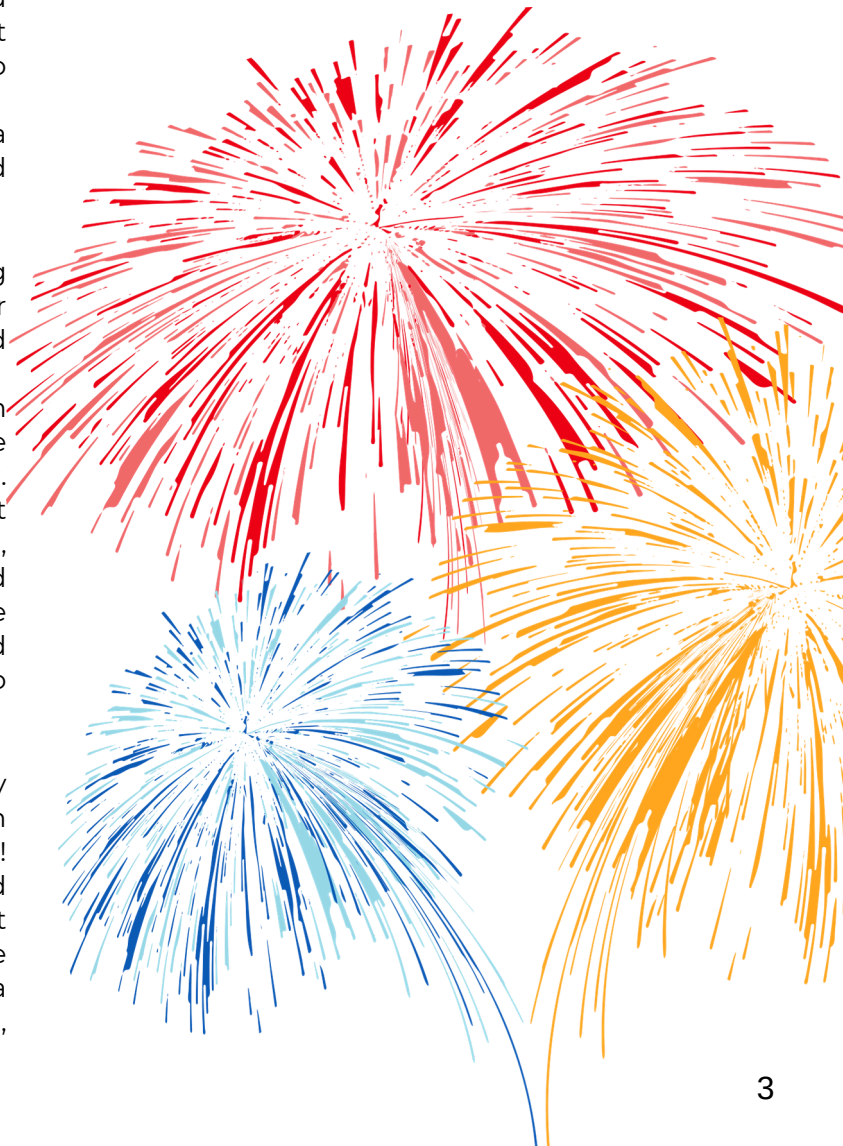
In his role at Temple Sinai, Rabbi Shaner will oversee all educational programming, including our Religious School. He will also help elevate educational offerings throughout the congregation by enhancing adult and family classes and expanding learning opportunities for all ages.

This year of anniversaries and milestones promises to be a time of reflection, renewal, and celebration. I hope that each Temple Sinai member feels a special connection to our community. Let us reach out to friends and neighbors and help welcome them to become a cherished part of our Temple family!

B’vrakhah, With Blessings,

Rick

Rabbi Rick Rheins





BELONGING AT SINAI

RABBI MICHAEL SHIELDS

There is something about the summer months that invites reflection. The pace shifts just enough for us to breathe a little deeper. School routines pause. Families travel. Camp begins. We spend more evenings outside, more time around tables and fire pits, more moments reconnecting with the people we love most.

And for a synagogue community, summer is not simply “downtime.” It is sacred preparation time. As we begin thinking about the coming year at Temple Sinai, one of the questions that keeps returning to my heart is this: How do we continue building not simply a busy synagogue, but a deeply connected one?

Over the past year, many of us on staff and throughout the congregation have been inspired by the ideas found in Relational Judaism, which reminds us of something both ancient and deeply human: people do not stay connected to Jewish life primarily because of programs. They stay connected because of relationships. Because someone remembered their name. Because someone invited them to sit at their table. Because someone noticed when they were absent. Because they felt seen, valued, and welcomed.

At its core, Judaism has always understood this truth. Long before there were synagogue buildings, there were tents. Tables. Campfires (unless there is a burn ban). Families gathering together. Sacred conversation. Shared responsibility. Human connection.

And perhaps no Jewish symbol captures this better than the sukkah. It may feel far away, but in just a little while, Sukkot will be here again. We will build temporary sacred spaces open to the sky. We will weave branches together overhead. And one of the beautiful truths of the sukkah is this: a single branch alone cannot create shelter. But many branches woven together can. The stronger and more interconnected the branches are, the stronger the sukkah stands. And perhaps that is also true of a synagogue community.

A vibrant congregation is not built only through clergy, staff, or formal leadership. It is built through relationships woven together across generations and backgrounds. Young families and seniors. New members and lifelong members. Camp friendships and prayer partnerships. Shabbat conversations and acts of caring. Different stories. Different perspectives. Different experiences. All intertwined together into something sacred.

The diversity of the branches matters. The weaving matters. The openness matters. A sukkah with closed walls is not really a sukkah at all. It is specifically meant to remain open, porous, welcoming. A sacred structure that makes room for guests.

That is the kind of Temple Sinai we continue striving to become. A place where people do not simply attend, but belong. A place where no one has to walk into Kiddush alone. A place where children grow up surrounded by Jewish role models and caring adults. A place where people feel comfortable bringing their whole selves. A place where relationships become pathways to holiness.

This summer, I hope all of us might reflect on the ways we can help strengthen the weaving of our communal sukkah. Maybe it means introducing yourself to someone new at services. Maybe it means inviting another family over for Shabbat dinner. Maybe it means reaching out to someone you have not seen in a while. Maybe it means welcoming a new member, volunteering, attending a gathering, or simply lingering a little longer in conversation after services.

Small moments matter. Jewish tradition teaches in Pirkei Avot: “Do not separate yourself from the community.” But perhaps the inverse is also true: Do not let others remain separated from it either. Thank you for helping make Temple Sinai not only a synagogue, but a sacred family.

If you are interested in being part of these efforts, helping us think more deeply about relationship-centered community, or simply learning more about how we can even more fully embrace the vision of Relational Judaism at Temple Sinai, I would truly love to hear from you. There are some guiding principles that I believe in and some wonderful resources that can help us think about this more intentionally.

Please feel free to reach out to me at rabbishields@sinaidenver.org. May we continue weaving our branches together with kindness, openness, and love. And may the shelter we create together continue to grow stronger with every new relationship we build.

Rabbi Shields

Rabbi Michael Shields



TEMPLE SINAI IS NOT JUST A PLACE OF WORSHIP, IT IS HOME

LISA THORNER EXECUTIVE DIRECTOR

Dear Temple Sinai Family,

Temple Sinai is more than a place of worship, it is home. It is where we celebrate life's milestones, find comfort in times of loss, raise our children in the traditions of our faith, and build the kind of community that sustains us. Everything we do here is grounded in that sense of belonging, and it is that commitment that guides every decision your leadership team makes.

I want to take a moment to speak with you directly about two modest changes taking effect beginning July 1. Temple Sinai will be implementing a small increase in annual dues and an adjustment to our security fee. I recognize that any increase in cost deserves thoughtful explanation, and you deserve to understand why these changes are necessary and how they support our entire community.

Three Percent Dues Increase

Our Board of Directors recently approved Temple Sinai's 2026–2027 operating budget. After careful review and discussion, the Board approved a three percent increase in annual dues.

Let me be clear: Temple Sinai's financial health is strong. This increase is not being made in response to financial hardship; rather, it reflects our commitment to ensuring that Temple Sinai remains the vibrant, engaging, and programs-rich congregation you and your family are part of.

The cost of delivering meaningful programming, maintaining our facilities, supporting our clergy and professional staff, and creating experiences that enrich Jewish life continues to rise. A three percent adjustment, equivalent to only pennies a day, allows us to continue providing the quality experiences and strong sense of community that make Temple Sinai a place where people choose to connect, grow, and belong.

Strengthening Our Security: A Responsibility We Take Seriously

We also need to speak about something more sobering. The world around us has changed. Antisemitism continues to rise across our country and around the world, and Jewish institutions, houses of worship, community centers, and schools are facing increased security concerns.

We cannot and will not ignore this reality. Beginning July 1, Temple Sinai's security fee will increase from \$118 to \$150, the first increase since the fee was established eight years ago.

Over the past year, Temple Sinai has made significant investments to strengthen the safety and security of our congregants, clergy, staff, Preschool families, and guests. Many of you have likely noticed some of these improvements when arriving on campus:

- Installation of five large protective boulders in front of the Temple and Preschool to strengthen perimeter security.
- Installation of five bollards between the Temple and Preschool.
- Placement of cement benches at the Preschool entrance for additional protection, with more benches planned for the fountain area.
- Installation of a new fence and exit-only push gate along Jefferson, matching the existing gate on Happy Canyon.
- Installation of fencing around the basketball court.
- Two additional push gates along Hampden Avenue, scheduled for installation in the coming weeks.

These measures are not optional, they are a fundamental responsibility we have to one another. The adjustment to the security fee reflects the real and ongoing costs associated with maintaining and strengthening these protections. Every dollar is dedicated directly to helping keep our community safe.

Our Commitment to You

The trust you place in us as stewards of this community and the financial commitment that membership represents for your family is not taken lightly.

Temple Sinai is strong because of you. These modest adjustments are designed to protect and preserve what we have built together: a warm, welcoming, safe, and thriving Jewish community for today and for generations to come.

If you have any questions, concerns, or would simply like to talk further, please do not hesitate to reach out to me directly. My door is always open.

B'vrakhah, With Blessings,

Lisa Thorne

Lisa Thorne

SLATE OF TRUSTEES & OFFICERS 2026-2027

WE ARE PLEASED TO ANNOUNCE THE 2026-2027 SLATE OF OFFICERS AND TRUSTEES. ALL NAMES AND TERM EXPIRATION DATES ARE LISTED BELOW.

Thank you for all you do with Temple Sinai.

Officer Nominations

Rob Eber, President (6/30/28)
Stephanie Podolak, Past President (6/30/28)
Rebecca Hea-Wilson, Vice President (6/30/28)
Ana Koser, Vice President (6/30/28)
Marshall Tobin, Vice President (6/30/28)
Jeanette Amayo, Secretary (6/30/28)

Trustee Nominations

Judy Aronson, Trustee (6/30/28)
Al Blum, Trustee (6/30/27)
Amanda Brooks, Trustee (6/30/27)
Reid Goodman, Trustee (6/30/27)
Jean Guthery, Trustee (6/30/27)
Jerry Lassow, Trustee (6/30/27)
Adam Melnick, Trustee (6/30/27)
Rachael Narcisi, Trustee (6/30/27)
Mark Shulman, Trustee (6/30/28)
Tamara Siegel, Trustee (6/30/27)
John Spanbauer, Trustee (6/30/27)
Jim Stone, Trustee (6/30/27)
Terri Tilliss, Trustee (6/20/28)
Melanie Wiseman, Trustee (6/30/27)

Thank you to our outgoing board members:

Phyllis Babich
David Eisner
Emily Yates
Kathy Zeiger

Respectfully submitted by the Nominating Committee:

Rebecca Hea-Wilson, Chair, Marshall Tobin, Chair, Shana Cohen, Gale Kahn & Wendy Vean

Meet Our Newest Board Members!

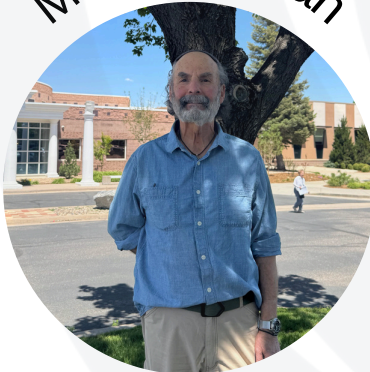
Judy Aronson



Judy Aronson found her Denver Jewish home at Temple Sinai when her friend Arnie invited her partner Steve and her to Friday night services the very first week they arrived in Denver. After services, they met the friendly dinner group and that was it. They joined Temple Sinai the next week and have attended Friday night services ever since. Judy has been involved in Jewish activities in all the places she has lived, from the JCC Nursery School Board and serving as B'nai B'rith Women's President in State College, PA, to twelve years on the Springhill Avenue Temple Board, Jewish Family Service Board, and the Film Festival Committee in Mobile AL. In Denver, she has become active in Hadassah, a Temple Sinai Chavurah and organizing holiday dinners at Overture.

Always involved in the cities she has lived in, she has been a docent and on the Board of the Palmer Museum of Art in State College, on the Mobile Symphony Board, and a graduate of Leadership Mobile. Her career included serving as an Academic Advisor at Penn State and the University of South Alabama, and a private practice in Career Counseling. In her free time, she enjoys watercolor painting, travel, music and theater.

Mark Shulman



Mark Shulman grew up in Maryland and moved to Colorado shortly after graduating from the University of Maryland. His work life centered on multi-family housing development and management throughout Colorado and the western United States, with a specialty for affordable and historic redevelopment projects. Mark and wife DeeDee are blessed with two children and four grandchildren. Their son Zach, daughter-in-law Dana, and their two children Danny and Zoe are active Temple Sinai members. Mark has a strong Zionist commitment, which began as a young man while working on kibbutz Beit Zera on the southern shore of the Kinneret. Over the past two years, Mark has spent many weeks of volunteer work throughout Israel. Mark is grateful to be part of the vibrant community that is Temple Sinai and looks forward to his role as a Trustee.

Terri Tilliss



Terri Tilliss is a Denver native and has been a Temple Sinai member for 44 years, where both of her children were B'nei Mitzvah. She is looking forward to returning to Board service after a two-year hiatus.

Terri's Bachelor's Degree is from the University of Iowa, where she also earned a Master's Degree in Dental Hygiene Education. Additionally, she holds a Master's Degree in Counselor Psychology and a PhD in Health and Behavioral Sciences from the University of Colorado.

Terri retired after 40 years as Professor at the University of Colorado School of Dental Medicine where she taught in the Baccalaureate Dental Hygiene program, and then in the Orthodontics department where she helped orthodontics students with their research projects and their patient behavioral management skills. In addition, she helped dental and medical students improve their communication skills with patients.

Busy since retirement, Terri serves on the Parker Scientific and Cultural Commission where she chairs the Parker Arts Lecture Series. She has chaired the very active Temple Sinai Action Against Antisemitism Committee for several years, recently stepping down to allow other leaders to emerge. She is currently co-chairing the newly revamped Sinai Social Committee.

Terri and her husband, Stacy Pocrass, have five adult children and two adorable grandgirls who are 16 months young. She feels that Temple Sinai is the best place for one's Jewish journey, and looks forward to "being back in the room where it happens," borrowed from a lyric in the Hamilton musical.



COMING HOME WITH GRATITUDE

RABBI JORDAN SHANER

DIRECTOR OF EDUCATION

Temple Sinai is, in many ways, my home. I read from the Torah as a Bar Mitzvah in the Zwerin Sanctuary, and celebrated the aufruf before my wedding in the Chapel, and worked in my first internship as a rabbinical student over a summer at Sinai. The Tanach I received from Sinai as a confirmation student still graces my bookshelf (as well as a volume of Hebrew poetry that I checked out from Temple's library many many years ago! Please forgive me for the theft, I couldn't bear to part with such wonderful words then or now). It is a wonderful feeling to be returning home after so many years away. I am genuinely excited to share the blessings I enjoyed growing up with my wife, Kate, and my son, Meir, particularly the blessing of living close to family. After seven years of living and working in Canada, I am excited about many of the American niceties we've missed: from shopping at Trader Joe's and Target, to the luxury of knowing I haven't omitted the "u" in words like "colour." But, it is also a little bit daunting. One of the things about growing up in one place and living in another is that it makes it a bit easier to believe that you stand firmly on your own two feet, that you are who you are now, and not who you used to be. But coming home has a way of making one feel smaller. After all, the great influences that brought me to this moment are all here. Returning home, I am faced with all the memories of my teachers, of Rabbi Zwerin, and Rabbis Rick and Susan Rheins, and all the community members who helped shape my life in so many ways. It is easy to forget, when one is away, what a debt they owe to their earliest role models and influences.

Forgetting the lessons of earlier generations is a preoccupation of the Jewish story. In the Torah, in Parshat Va'etchanan, Moses speaks to the Israelites and says: Only watch yourselves scrupulously, so that you do not forget the things that you saw with your own eyes and so that they do not fade from your mind as long as you live. And make them known to your children and to your children's children: (Deut. 4:9). This passage follows immediately after Moses' great praise for the Israelites. He asks, is there another people as well

regarded for their laws and customs, their wisdom, and their faith. But then immediately he says: careful! Don't let it go to your head! Don't let your story be forgotten!

Judaism depends not only on the generations of the past, but most especially, on the future generations and on our ability to share the Jewish experience with them. 'Make it known to your children and children's children' this is the mitzvah of all mitzvahs. We cannot expect that future generations will remain attached to the Jewish peoples' story if we do not share our own Jewish story with them. We cannot expect our kids to be proud of their Jewish identity if they don't know what it means. Formal and supplemental Jewish learning can help. But it's not enough. The mission of Jewish education is not to make sure every kid has a Bar or Bat Mitzvah, or a fun summer at camp. It is not only to make sure that they can follow along passively in services, or even to turn our kids into thoughtful, engaged citizens of the world. The primary goal of Jewish education is for the next generation to create an attachment to the Jewish story, to help our students create the next chapter in that story.

As I return to my Temple Sinai home, I can't help but reflect on the gift that I received from my own teachers, leaders, and rabbis: the gift of knowing enough about our story to participate in it today. I can't wait to begin sharing that gift again with the Sinai community and its next generation.

See you soon,

Rabbi Jordan Shaner

Rabbi Shaner



RUTHIE LIPSHULCH

CANTORIAL SOLOIST



Next Musical Shabbat:

Friday, June 5 at 6:00 PM

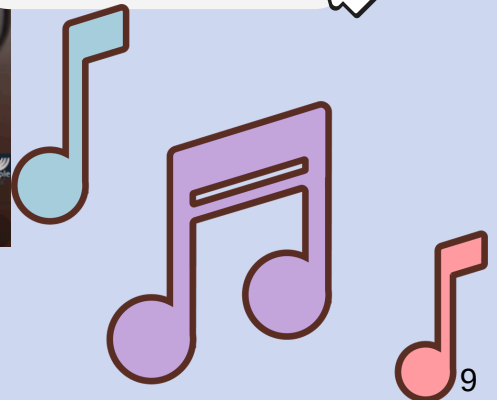
Join us for an evening of music, prayer, and community.

Shared Voices (B'yachad): An Outdoor Shabbat Circle:

Friday, June 26 at 6:00 PM

Friday, July 24 at 6:00 PM

Here are a couple of learning videos for some new melodies:



Yours in Song,
Ruthie
Ruthie Lipshulch

MITZVAH DAY UPDATE: WE TURNED JEWISH VALUES INTO ACTION

DEBBIE FOSTER DIRECTOR OF ENGAGEMENT AND PROGRAMMING



Dear Temple Sinai Community,

Thank you to everyone who participated in Mitzvah Day! Your kindness, energy, and commitment to helping others made the day truly meaningful. Look at what we did!

- ◆ Packed over 500 lunches
- ◆ Bagged 500 pounds of rice and beans
- ◆ Fixed 20 bicycles
- ◆ Made 90 cards, goodie bags, and tiger beads for sick children
- ◆ Helped build a house
- ◆ Cleaned up and painted rocks at our Jewish cemetery
- ◆ Helped organize Clothes for Kids
- ◆ Sorted bushels of clothes for the L'Dor V'Dor Baby Pantry
- ◆ Painted six stunning panels for women's shelters
- ◆ Organized the Religious School library
- ◆ Cleaned all our blue blocks
- ◆ Made brunch for residents at Ronald McDonald House
- ◆ Helped 12 residents at Kavod
- ◆ Donated lots of blood
- ◆ Played with several rescue cats and helped clean up the center
- ◆ Donated carloads of supplies to JFS, Humane Colorado and Clothes for Kids
- ◆ Made 300 Blessing Bags for the unhoused
- ◆ The Sinai Songbirds led a sing-a-long for the residents at Shalom Park
- ◆ Repaired over 65 prayer books
- ◆ Raised over \$2,700 to help cover supply costs to make all the Mitzvot possible

Do you want to do more Mitzvot with the Sinai community during the year?
[Email Shana](#) to learn about our Sinai Tzedek Committee.

It would help us if you would take three minutes to fill out our [Mitzvah Day Feedback Form](#) so we can improve and build on our successful event!

Check out all our [Mitzvah Day Photos](#) and upload your own!

Keep the Mitzvot flowing!

We are launching a monthly volunteer group to prepare brunch for the families caring for sick children at the Ronald McDonald House. Stay tuned for more details.



Debbie



Meaningful Tzedakah

MONA SPITZ

DIRECTOR OF DEVELOPMENT

Did you know that Temple Sinai has several special-purpose funds you can support with a gift to the Temple? These funds allow you to direct your contribution toward the programs and initiatives that are most meaningful to you. Here are just a few funds to consider. A full list is available in ShulCloud, or feel free to [contact me](#) for more information.

- **The Alan Farber Memorial Camp Scholarship Fund** helps underwrite a portion of camp tuition for JCC Ranch Camp, Shwayder Camp, and Camp Ramah.
- **The Daniel Aaron Lipson Memorial IST Scholarship Fund** helps support students participating in recognized Israel Study Tour (IST) programs.
- **The Jeffrey O. Rosenberg Memorial Scholarship Fund** supports B'nei Mitzvah tutoring for families in need and provides course materials for Temple Sinai members enrolled in higher education Jewish study courses and rabbinic studies.
- **The Eber Cultural Arts Fund and the Osi and Selma Sladek Cultural Arts/Music Fund** promotes and underwrites cultural programming, including films, performers, and guest speakers.
- **The Prayer Book Fund** helps maintain our prayer book collection and supports the purchase of new prayer books.
- **The We Care/Social Action Fund** supports the important work of our Caring and Social Action group as they assist community members in times of need.

You can also honor or memorialize loved ones, or celebrate special occasions, through a tribute gift to Temple Sinai's Tree of Life, Wall of Remembrance, or Brick-by-Brick Project. If any of these are of interest, I'd be happy to discuss the different options.

And if you've heard about our Sinai Circle and would like to learn more, please join us for a special event on Sunday, July 26. Enjoy cocktails and appetizers while hearing from current members about what makes Sinai Circle so meaningful. Invitations will be coming soon!

Thank you for all you do to keep Temple Sinai vibrant and strong. Wishing you a relaxing, enjoyable and fun-filled summer!

Warmly,

Mona

Mona Spitz





TRANSFORMATION IS EVERYWHERE

SHEILA PURDIN

DIRECTOR OF EARLY CHILDHOOD EDUCATION

As we approach the end of the school year at Temple Sinai Preschool, transformation is everywhere we look. In our classrooms, children gather eagerly waiting for chicken eggs to hatch and watch in amazement as caterpillars emerge as butterflies. These moments invite children to slow down, observe closely, ask questions, and experience genuine wonder.

This year, our learning has also extended beyond our own walls through the livestreamed chicks at the Boulder JCC. Our children delight in checking in on the chicks together, knowing that other children and families across the Jewish community are sharing in the same excitement. It is a beautiful example of *Kehillah*, the importance of community and connection, reminding our children that learning and joy are even richer when experienced together.

At the same time, we are witnessing another remarkable transformation: the growth of our children themselves. As we look around our classrooms at the end of the school year, we see children who are more confident, independent, compassionate, and curious than they were at the start of the year.

Friendships have formed, voices have grown stronger, and acts of *Chesed*, kindness and care for one another, happen naturally throughout the day, whether helping a friend zip a coat, comforting someone who is sad, or celebrating each other's successes.

Judaism teaches us to notice the wonder present in everyday life. Watching a chick hatch or a butterfly emerge becomes more than a science activity; it becomes an opportunity to appreciate the beauty of growth, patience, and creation itself. In many ways, these experiences mirror the journey of childhood. Growth often happens slowly and quietly until suddenly we realize just how much has changed.

As the school year comes to a close, we feel grateful for the privilege of witnessing these transformations together in nature, in our children, and within our community. Like the chicks breaking through their shells and the butterflies spreading their wings, our children continue becoming exactly who they are meant to be.

Sheila
Sheila Purdin





SUMMER CAMP 2026



SESSION 1: JUNE 1-JULY 2
(CLOSED JUNE 19 & JULY 3)

SESSION 2: JULY 6-31

REGISTRATION OPENS FEB 10



*limited space available

PRESCHOOL REGISTRATION 2026-2027



Registrations received after the priority period will be accepted in the order they are received. When all spaces have been filled new applicants will be placed on a wait list.



Limited Spots Available

Nonrefundable and nontransferable registration fee and tuition deposit due at registration .



BRYNN TULLY

YOUTH ENGAGEMENT DIRECTOR/ FAMILY PROGRAMMING ASSISTANT

Hello Temple Sinai! This year has been incredible for our youth groups, and I cannot thank you all enough for welcoming me back into the community. We have some exciting updates for Meretz and Ruach, and a TSYG summer meet-up. We are also looking for youth group members who would like to help find or create art to decorate the new Youth Lounge, so please reach out to me at brynn@sinaidenver.org if your children would like to participate!

Thank you all for a phenomenal year, and I am looking forward to all the fun programs next year in the fantastic new Youth Lounge!

UPCOMING EVENTS:

Meretz and Ruach Updates:

Beginning next year, individual Meretz and Ruach programs will be available for \$12 per program. Families may also purchase a bundle of all seven programs for \$70, offering a discounted rate and full access to the year's programming.

Young Professional Updates:

Israel Unpacked: The Mizrahi Experience
Thursday, June 4 at 6:30 PM


This year, I'm so excited to be participating in the Reform Movement Alumni For Israel Fellowship with Temple Sinai, and I'm thrilled to invite you to our first event! We'll be exploring the history, culture, and experiences of Persian Jews the broader Mizrahi community through an engaging conversation led by Rabbi Shields. Join us for appetizers, time to connect and network, and a meaningful evening of learning together. This program is open to young professionals between the ages of 22-35.

TSYG Rockies Game:

Sunday, July 19 (drop-off at Temple Sinai at 12:00 PM)
Rising 9th-12th Graders

Join us for a fun day at the Colorado Rockies game! Cost is \$18 per teen. Please make sure teens bring extra money if they'd like to purchase lunch, snacks, or drinks at the game. Can't wait to see you all there! We will carpool to the ballpark from Temple Sinai. Drop-off at Temple will be at 12:00 PM, and pick-up will be around 4:30 PM.

Teens -
Want to stay in the loop? [Join our group chat](#) for updates, reminders, and all things TSYG! Chat is for 9th-12th graders



Follow us on Instagram!
All programs will be posted to stay up to date
[@templesinaiyouthgroup](#)



MEMBER SPOTLIGHT

JONATHAN FALK

SENIOR VICE PRESIDENT FOR CAMPUS SOLUTIONS AT HILLEL INTERNATIONAL

We were used to a pretty steady stream of calls, texts, and emails reporting things like a swastika on a bathroom floor, a Jewish student being punched or a threat that the kosher dining hall would be shot up. As the person leading Hillel International's Israel Action and Addressing Antisemitism program, my team and I had developed an unfortunate fluency in these incidents: what they meant, how to respond, and what came next.

Then, in the middle of April 2024, something shifted. Students and others staged an anti-Israel encampment in the middle of Columbia's campus, and within days, my inbox looked like a fire alarm had gone off simultaneously across the country as more than 100 campuses followed. The tents multiplied. And what happened around them was not only standard protest: students chanting for the elimination of Israel, antisemitic tropes displayed openly on posters, Zionist students physically blocked from parts of their own campuses. For many Jewish students, the encampments felt like a message directed specifically at them: You don't belong here. This moment confirmed just how isolated, vulnerable, and misunderstood they had become on way too many campuses.

Now that we have some distance from spring 2024, it is worth asking what we have learned since and whether we are prepared to be honest about the answers.

Some things have improved. Some campuses are less visibly chaotic. Some interventions have worked. But the encampments were never the whole story. They were one highly visible expression of a deeper problem — a problem that did not leave when the tents did.

Since the encampments, the most important thing we have learned is that antisemitism is adaptive. When one form becomes less acceptable or more constrained, another emerges. And what has emerged over the past two years is more diffuse, more ideologically embedded, and in some ways harder to confront than a tent city on the quad.

The hatred did not disappear after the encampments — it migrated. More than half of what Jewish students experience now shows up online: in posts, anonymous

messages, group chats, and the steady churn of conspiracy and incitement. A campus can look calmer and still be deeply unhealthy.

And it has persisted regardless of what's happening in the news cycle. We continue to see antisemitism on campus even when an immediate conflict fades from the headlines. That tells us the issue is not limited to one conflict or one protest wave. In too many places, there is now a deeper culture in which Jews are treated with suspicion, Zionists are cast outside the moral community, and anti-Jewish hostility is rationalized as politics.

Two specific developments have accelerated this. The first is the normalization of Holocaust inversion — the idea that Jews today, or the Jewish state, are the new Nazis. This is not criticism. It is a way of weaponizing Jewish memory against Jews, draining the Holocaust of its meaning while recasting Jewish identity as uniquely suspect. The second is the anti-Israel Boycott, Divest, Sanctions campaign playbook. When BDS comes to campus, antisemitism reliably increases, not only at the final vote, but throughout the campaign itself, which stigmatizes Jewish students and isolates Jewish voices long before any resolution passes.

The good news is, in the past two years, we have also learned what actually makes a difference.

Clear rules, consistently enforced, work. When schools establish expectations and follow through on them, harassment and intimidation decrease. This sounds obvious, but it had to be relearned at enormous cost to Jewish students on too many campuses. Security matters in the same way. Students feel it when adults take their safety seriously. Visible deterrence and thoughtful security planning change behavior. Too often, security was treated as an overreaction or as a panicked last resort. We learned that it is frequently what allows Jewish life to continue with confidence.

But enforcing rules and improving security only address part of the problem. The encampments taught us that campus antisemitism is fundamentally a climate problem, not a conduct-management problem. What gets normalized, what gets excused, what university

leaders are willing to name clearly — that is what shapes whether Jewish students feel they belong. If a school removes tents while leaving the ideas and norms that enabled them untouched, then that is not a solution, it is a surface repair.

Taken together, these lessons clarify what universities and the Jewish community must do next.

First, education matters. Campuses cannot rely on crisis response alone. They must invest in helping students, faculty, and administrators understand antisemitism and respond with clarity.

Second, enforcement matters, but it is not enough. Universities need to go beyond reactive responses and do the deeper, proactive work of strengthening their codes of conduct and student and faculty disciplinary procedures so expectations are clearer for everyone long term.

Third, Jewish students need more than protection. They need places where they can live Jewishly with joy, confidence, and belonging.

Fourth, universities and the Jewish community must continue investing in Jewish student resilience and leadership so students are not only protected in difficult moments, but they are equipped to lead, respond, and thrive through them.

I still receive calls and emails from Hillel professionals navigating hard moments on campus. But the nature of the requests has shifted. I see fewer urgent Slacks about immediate chaos. More are about the quieter, more entrenched problems: the hostile syllabus, the student group that got excluded from a coalition, the administrator who didn't know how to respond and didn't ask. The problems are less dramatic and in some ways more stubborn.

What I hope for, and what I believe is possible, is a future in which these calls become fewer and fewer. Not because antisemitism has been eliminated, but because universities have built the knowledge and the habits, and the institutions will address it early and more effectively to strengthen what all students need to thrive. That is the work we at Hillel are helping to lead: partnering with universities to improve campus climate, strengthen expectations and accountability, and invest in the resilience, leadership, and flourishing of Jewish students. Campuses where education, stronger conduct systems, consistent enforcement, and genuine investment in Jewish life have changed the climate enough that the next generation of Jewish students doesn't have to spend their college years wondering whether they truly belong.

The encampments forced a reckoning. That reckoning is not over. Universities must continue to educate, enforce their rules, and create the conditions for Jewish students not only to be safe, but to live with pride and joy. This path forward is clearer than it was two years ago, and the universities willing to take it seriously have the chance to make a real difference.

Looking for Ushers: Creating Safety and Order

Your Temple Sinai Security Committee continues its focus on providing a safe and secure environment as we navigate these trying times as a community. Working closely with the Temple staff, nationally recognized security experts and local law enforcement, we continue to make improvements to both our physical security measures at the Temple, as well as our preparedness to deal with potential threat situations. As a next step in this evolving process, we are looking to create a team of trained volunteers to provide support during large community events at the Temple to include ushering at large services like High Holy Days. Activities might involve helping with check in, bag checks and providing extra awareness during activities at the Temple. To be clear, no security background is required. Our paid security professionals continue to serve this function. The only prerequisite is a desire to help augment the Temple staff and the Security Committee during busy activities. The time commitment is not large and our goal is to have enough volunteers to provide flexibility for scheduling. Basic awareness training will be provided by Secure Community Network professionals. If you would like to volunteer or just learn more about this opportunity to support our community reach out to Lisa Thorner at lisa@sinaidenver.org.

MEET TEMPLE SINAI'S UNSUNG HEROES

We asked our Heroes the following questions:

- 1) How long have you been a member at Temple Sinai?
- 2) Which committees do you chair or actively participate in?
- 3) What inspired you to get involved at Temple Sinai, and what keeps you engaged today?



Shana Cohen

- 1) Almost 14 years (Joined September 25, 2012)
- 2) I began attending Tot Shabbat when Eli was little and spent many years enjoying the monthly Junior Shabbat programs, both indoors and outdoors. Over the past two years, Eli and I have worked alongside Debbie Foster to help lead Twisted Shabbat because we believe strongly in creating meaningful Jewish experiences for children and families. Since 2018, I have helped organize our Chavurah groups and have been a member of the Adult Choir since 2016. Over the years, I have also served on the Religious School Task Force, been a Religious School room parent, and participated in the Nominating Committee each spring, helping to interview and identify future Board members. I am currently involved with the Engagement Committee, where I helped research and implement the Temple's name tag initiative, and I serve on the Diaspora Dinners Committee. Throughout the years, I have helped organize numerous family programs and community events. Most recently, I had the privilege of co-chairing our community-wide Mitzvah Day, bringing together congregants of all ages in meaningful acts of service and connection.
- 3) Being part of a Jewish community is an important part of my life. I pitch in and help because I want to create the type of place that makes others feel comfortable and know that they belong. I try to be a friendly face and offer my ideas and support for events and programs that I find interesting and engaging.



Gary and Nancy Eisenberg

- 1) Nine years (Joined January 18, 2018)
- 2) **(N):** I chair the Caring Community and within that am very active with new member baskets and paint challah covers for them. I have arranged events and outings for Sinai Sisterhood and Sinai Social, I am in charge of drop-in MJ, and volunteer at Preschool events, Halloween and the Purim Carnival. I chaired a large book sale. I am also on the Engagement Committee. With that, I have been a greeter at Shabbat services and have helped organize some events. I have been an usher a few times at High Holy Days services. I also was on a Rabbinical Search Committee. When we moved here from out of state, we knew no one except our son. We knew the best way to connect with our community was to be involved with a temple. After joining, I just started to volunteer with my interests. I am a gatherer at heart, so planning events was a natural for me. **(G):** VP of Programming Brotherhood, Security Committee, president of our (Education) Chavurah, supervise TS monthly Grief Support Group, and Bike Captain on Mitzvah Day. Gary and his crews have donated over 250 bikes in his years volunteering at his Florida temple and Temple Sinai.
- 3) **(N):** What keeps me engaged are all of the people. Clergy, staff, and members. We all have the same goals. The clergy are always very caring and personal. The staff is very easy and fun to work with. I have met many wonderful members and have made many great friends and created relationships. I feel at home here and this is where my extended family is. **(G):** Good people, fine friends and an opportunity to be part of a supportive and active community.



Lisa Friedman

- 1) 40 years (Joined August 1, 1984)
- 2) I served on the Board for seven years (two of those were on the Executive Board). I chaired the Social Action Committee during that time, I also served on the Rabbinic Search Committee for Rabbi Rheins, and for three years on the committee that interviews and selects new Board members. I have chaired the Habitat for Humanity Committee since 2001.
- 3) In the beginning, I was inspired to join Sinai so I could be part of a vibrant Jewish congregation/community and instill these important spiritual, educational, and cultural Jewish values to our family. As empty nesters for the past 20 years, my husband and I still remain strongly engaged in our Sinai community. Being able to develop and participate in social action programs, and attend adult education and religious services continue to make Temple Sinai such an important part of my life. Being part of our wonderful chavurah for the past 10+ years has also added so much more to our lives through special friendships and a smaller, more intimate sense of community.



Barbara Glassman

1) Founding member in 1967

2 and 3) What inspired me to get involved with Temple Sinai goes back to 1967, when a new organization was being discussed. I was asked to serve on the Planning Committee as one of only two women helping to organize and develop what would eventually become Temple Sinai. In many ways, I was involved before Temple Sinai was even Temple Sinai. We even chose the name together. Over the years, I've served on many different committees and taken on many different roles. I was the Religious School Director, and I was also asked to help develop and organize the Sisterhood. Before becoming Religious School Director, I taught in the Religious School, and later, I substituted in the office for a while, mainly answering the telephone. I've really never spent much time away from Temple Sinai. Along the way, I became close friends with the rabbis at Temple Sinai, who remain dear friends of mine, and I've also become very close with the current staff. They are so wonderful that I genuinely enjoy coming in to volunteer, seeing them, and talking with them. Temple Sinai has become part of my life. There was a brief period when I wasn't as involved, but even then, one of my projects here was mapping and charting both the Tree of Life and the Memorial Wall. That was actually a fun time, standing on a ladder doing all of that work! Overall, it has truly been my pleasure. I've simply enjoyed all the years I've spent being around Temple Sinai



Jean Guthery

1) 46 years (Joined September 20, 1980)

2) (1) Temple Sinai Choir for 46 years. (2) Torah Study for 30 years, then Pirkei Avot Study ongoing. (3) Active volunteer participant in services in Morning Minyan for 12 years. (4) Member of Temple Sinai Board of Trustees for three years. (5) Board Member on committee for Lifelong Jewish Learning for three years. 6: Board member assigned to committee for Sisterhood.

3) A meaningful moment for me was the first time I attended services at Temple Sinai on Yom Kippur 1980. It was then that I heard Rabbi Zwerin give a sermon to his young congregation that the beautiful synagogue on East Dartmouth for which they had raised funds, built and inhabited for three-plus years was falling apart. I was captivated by the tone of the sermon which captured the emotion of the moment--heartbreaking disappointment, anger and then resolution to face the challenge ahead. It was an outstanding example of leadership in which Rabbi Zwerin shared with his congregation "that what makes us great as a people is our ability to master challenge," that they would meet this challenge and emerge mature in their commitment, united as a congregation and respected. And, that "our children will see that lip service to an idea, to a dream is not enough, that they will see our efforts and our dedication." It was one of Rabbi Zwerin's finest hours and resulted in the finest hour of the congregation. And it is my fondest memory of Temple Sinai and is the reason for the values of resilience, commitment and community that has continued to be values of Temple Sinai. I have never forgotten that day, that sermon or what followed in the commitment of that young congregation. It is my feeling that this piece of Sinai's history should be part of the introduction of every new congregant to the Temple, including a copy of Rabbi Zwerin's sermon that day.



Jerry & Natalie Lassow

1) 17 years (Joined August 21, 2009)

2) **(J)** Member of the Board for three years (make and deliver condolence baskets for congregants) and member of Temple Sinai Brotherhood. Weekly greeter for Shabbat services and arranges weekly Friday night dinners. **(N)** Member of the Caring Community and makes and delivers condolence baskets. We both attend every event possible at Temple Sinai.

3) **(N)** The thing that I think got me most involved was the fact that in 2012, we went to Israel with Rabbi Rheins, and we had been members for a couple of years and coming to services, but we didn't really know anybody. On that trip there were 36 of us, and we called ourselves the Double High, and the group remained close. Afterwards, we had at least 24 people that attended services that we didn't know before that trip. We felt like we belonged. As a result, we started going to Lunch and Learn every week. And for me, that was enlightening because I had no religious background and that was a learning experience. It continues to be even now, as we go to Lunch and Learn every week and if we're not there, then we're on Zoom. **(J)** Yeah, she stole my fire over here. It is the trips to Israel (I've gone on at least three or four of them and they are always the high point). Temple membership is so friendly, they envelop you. We are also now in charge of the Friday night dinners after services. And when we bring new people in there, they are always welcomed by the rest of the group.



Jon Levison

- 1) 12.5 years (Joined June 30, 2014)
- 2) Brotherhood President, chairperson for Annual Brotherhood IST Charity Golf Tournament, chair of the Security Committee, volunteer author for multiple FEMA sponsored security grant submissions, and volunteer author writing Threat Response and Emergency Operations Plans to improve overall security at Temple Sinai.
- 3) Sense of belonging and giving back to the Jewish community.



Janet Walker-Snyder

- 1) 5.5 years (Joined February 1, 2020)
- 2) I actively participate in Friday night services, Temple Sinai Sisterhood, Social Committee, Rosh Chodesh, Mitzvah Day, and any food drives. I stay engaged when someone comes up with an activity and is able to involve people who may not have been involved before. My engagement level is not dependent upon how many people attend an event but how connected everyone feels.
- 3) I feel a deep need for connection in general, but specifically with other Jews and Jewish women. Even before the marked increase in antisemitism, there is something special about gathering with other Jews, whether it before a service or an event. I particularly feel that Jewish women need to connect more. They are dealing with misogyny and antisemitism, both of which can affect how you go through your day. Meeting with other Jewish women to talk about that or anything else helps create a bond and a buffer against those insults.



Terri Tilliss

- 1) 44 years (Joined August 1, 1984)
- 2) Past Board Member and will be rejoining the Board in July. Chaired the Action Against Antisemitism Committee for nearly four years and now I am the secretary. I am a co-chair of the new Sinai Social Committee.
- 3) Initial inspiration was when my first child was born; her baby naming ceremony was our first activity as members. My continued engagement is because Temple Sinai, just as stated on the website is THE Home for my Jewish Journey. It serves as my center for spirituality, learning, social interaction, and communal responsibility, to further quote the website! I have always felt that it would be lovely if one's synagogue could also feel like a JCC, and mine does!

YOUNG LEADER OF THE YEAR



Amanda Brooks

- 1) 3.5 years (Joined August 12, 2022)
- 2) I'm involved in the Engagement Committee, Temple Sinai Preschool Leadership Committee, Diaspora Dinners and Temple Sinai Sisterhood, and I serve on the Board of Trustees.
- 3) We found our community through the Temple Preschool and the young family Shabbats, really at the same time. Our son made friends, we made friends, and those monthly evenings became something we all looked forward to as a family. More than anything, I want Temple Sinai to be a place my son loves, where he feels safe, connected to his Judaism, and surrounded by people who know his name. Helping build that kind of community for young families is what makes me excited to show up and volunteer my time.

JOIN US FOR WORSHIP

All services are open for in-person attendance and will be streamed live at sinaidenver.org/livestream or on our Facebook page at Facebook.com/SinaiDenver

WEEKLY

EREV SHABBAT SERVICE

FRIDAYS, 6:00 PM

Join us to welcome Shabbat every Friday evening. Temple Sinai's service is a rich mixture of Jewish tradition and modern egalitarian spirit which makes for an inviting and inclusive experience for those of every age and background. Our service is filled with wonderful music that includes both traditional and modern melodies. Thoughtful messages from the rabbis enhance our services. We conclude every Erev Shabbat service with an *oneg* dessert and social time to renew friendships and meet new friends.

SHABBAT MORNING MINYAN

SATURDAYS, 9:00 AM

Every Shabbat morning we have a lovely service that encourages participation and *ruach*, a joyous spirit. In addition to the rabbis, congregants are invited to help lead the service. Opportunities are available for members to read Torah, provide a short *drash* (message about the Torah portion) and help lead the prayers. If you are interested in leading a part of the service, contact Rabbi Rick Rheins or Rabbi Michael Shields. This service is a fabulous way to celebrate Shabbat and to meet wonderful new friends.

TISHA B'AV SERVICE: WEDNESDAY, JULY 22 AT 8:00 PM

Tisha b'Av, the 9th of the Hebrew month of Av, is the saddest day of the Jewish year because it marks the anniversary of the destruction of the First Temple in Jerusalem by the Babylonians (586 BCE) and the destruction of the Second Temple by the Romans (70 CE). In reflection of the tragic events that have occurred on this day, Tisha b'Av has long been observed as a day of fasting and mourning.

In addition to the destruction of the Temples, many other catastrophes have fallen on this very same date. For instance, in 1492, Jews had until the 9th of Av to flee Spain. Also, on August 1, 1914, the 9th of Av, the formal order of mobilization was ordered by the Germans and World War I began.

Temple Sinai's observance of Tisha b'Av begins at 8:00 PM on Wednesday evening, July 22, and will include a service and readings from the Book of Lamentations. The prophet Jeremiah was said to have written Lamentations as he witnessed the fall of Jerusalem some 2,500 years ago. Together we will read and discuss his words and have a service that reflects the meaning of this ancient day of mourning.

MONTHLY

HEALING SERVICE/VIRTUAL AT 11:00 AM

THURSDAY, JUNE 18 & THURSDAY, JULY 16

For our Healing Service, we gather virtually for prayers, meditations, music, and the warm embrace of friends to renew our sense of hope, strength, and healing. The Healing Service is for those who are struggling with their health, for those struggling with sadness and grief, for caregivers who seek inspiration as they pray for the welfare of loved ones.

If you are unable to attend the Zoom Healing Service, just send us the name(s) of the loved ones you would like mentioned during our prayers. Please be sure to let them know that they are in all our thoughts and prayers. All are welcome.



JOIN US FOR WORSHIP

SHARED VOICES (B'YACHAD): AN OUTDOOR SHABBAT CIRCLE

FRIDAY, JUNE 26 AND FRIDAY, JULY 24

These evenings are rooted in a simple but powerful idea: Jewish prayer is not meant to be something we merely watch. It is something we create together. Shabbat invites presence. Voice. Breath. Community. Spirit.

This is not a performative experience where one person creates while everyone else watches quietly from the sidelines. This is active, living prayer. A musically flowing outdoor Shabbat where each person helps shape the atmosphere simply by showing up authentically.

Some people will sing loudly. Others may hum quietly. Some may close their eyes and simply listen. Some may clap along or sway with the music. Some may bring instruments and help lift the prayer musically. Every one of those ways of participating is holy.

If you are a musician, we warmly encourage you to reach out to Rabbi Shields at rabbishields@sinaidenver.org to receive music in advance. We believe deeply that Jewish music belongs to the community.

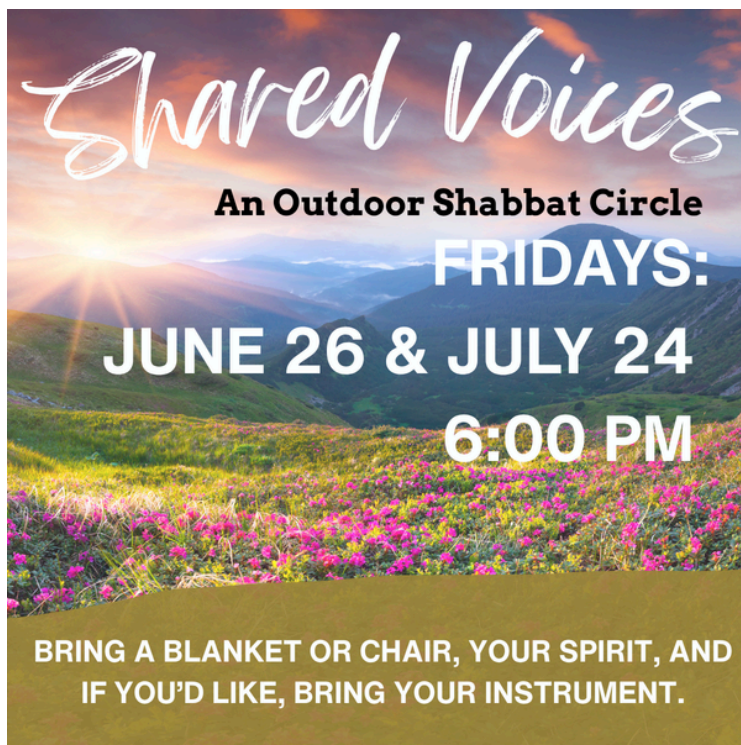
Judaism's deepest truths: revelation itself was communal. Torah was not given to one individual alone atop a mountain in private. It was experienced together, as a people gathered at Sinai. Jewish spirituality has always lived in the space between voices joined together.

These gatherings are intentionally casual and welcoming. Bring camping chairs, picnic blankets, family members, friends, and neighbors. Come comfortable. Come curious. Come exactly as you are. All ages are welcome.

Together (B'yachad) we can create something beautiful.

Together (B'yachad) we can uncover the music already waiting inside us.

Together (B'yachad) we can continue discovering what Jewish prayer becomes when it is created voice-by-voice, soul-by-soul, heart-by-heart.



WE CANNOT WAIT TO WELCOME SHABBAT WITH YOU UNDER THE SUMMER SKY.

ADULT EDUCATION

ARGUMENTS FOR THE SAKE OF HEAVEN
BY THE LATE RABBI LORD JONATHAN SACKS
WITH RABBI RHEINS
TUESDAYS AT NOON (VIRTUAL)
JUNE 9, 16, 30
JULY 7, 21, 28

Our new weekly text study will focus on the important book ARGUMENTS for the SAKE of HEAVEN by Rabbi Lord Jonathan Sacks zl. His books are always thought provoking, and this one is especially timely as it explores the growing rift between Orthodoxy and Reform, particularly in America. It also reviews the parallel conflict between ultra-religious and secular groups in Israel.

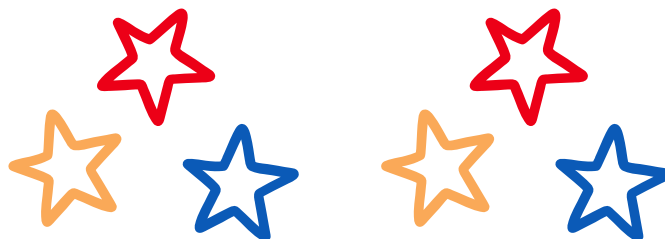
For each class, we will read a section of the book and take time to discuss and share our thoughts. Over the years, these text classes have given us opportunities both to learn and to create wonderful friendships. A PDF of each week's text will be sent out with the Zoom link.

Even if you missed the first several sessions, you'll easily fit in and be able to participate in the discussions!

LUNCH AND LEARN
COME LEARN, DISCUSS, DEBATE AND
MEET FRIENDS
THURSDAYS
JUNE 4, 11, 18, 25
JULY 2, 9, 16, 30
**NOTE THAT THERE IS NO L&L ON JULY 23, TISHA B'AV
AT NOON

Review ethical and moral issues in selected Jewish texts with Rabbi Rheins or Rabbi Shields. Discuss the important issues of the day. Bring your lunch! We will serve the text and topics!

**NEWCOMERS QUICKLY AND EASILY
FIT RIGHT IN!**
*It's a great way to learn and
meet new friends!*




**ACTION
AGAINST
ANTISEMITISM**

CALL TO ACTION

The Temple Sinai Action Against Antisemitism Committee is passing on a call to action from the Anti-Defamation League (ADL).

Congress has introduced the Jewish American Security Act, a comprehensive bipartisan bill to strengthen security for Jewish institutions, protect Jewish students and hold social media platforms accountable for antisemitic content. Please contact your representative today and urge them to support and pass this critical legislation by clicking [here](#).

Jewish organizations and synagogues such as ours, must spend millions on security that could otherwise be used for programs and education. Social media has become a hotbed of antisemitic content. This bill can help with both.

Please show your support by clicking [here](#).

When We Speak Together, We Are Heard

...NOTES FROM OUR CLERGY

SICK? STRUGGLING? WANT A CALL OR A MEETING? INFORM THE RABBIS!

Adding to the agony and frustration of dealing with illness or struggling with a difficult time is the nagging thought that you are forgotten and that no one cares. Temple Sinai most certainly cares about every one of our members. Rabbi Rick Rheins and Rabbi Michael Shields will be quick to respond when any of our members and loved ones are struggling. In addition, Temple Sinai has a wonderful group of volunteers on our Caring Community who help to provide assistance. Please call or write to our rabbis and let them know that you'd like their help and attention.

Confidential messages can be made directly to:

Rabbi Rick Rheins and
Rabbi Michael Shields

B'NEI MITZVAH DATES ARE AVAILABLE IN 2027 & 2028

Know that it is never too late to have our children experience the life-affirming joy and pride of accomplishment by leading a service as a Bar or Bat Mitzvah. If you have a child who will turn 13 (or older) in 2027 or 2028 and you do not yet have a reserved date for a service, please call Rabbi Rick Rheins or Rabbi Michael Shields and we'll answer all your questions and help you find a date that works for your family. Date selection request forms are available in the Temple Sinai office and can be mailed directly to you. Know that our clergy work personally with each student and their family to help create a memorable celebration that will bring a lifetime of blessings.

INTERESTED IN BECOMING JEWISH OR LEARNING MORE ABOUT JUDAISM? SIGN UP FOR THE NEXT INTRODUCTION TO JUDAISM COURSE!

The Rocky Mountain Rabbis & Cantors (RMRC) offers a nationally renowned 28-week Introduction to Judaism (ITJ) course. This program is taught by rabbis and cantors from the Reform, Conservative, Reconstructionist, and Modern Orthodox movements. ITJ is a cornerstone of the Denver Jewish community's conversion program. It is one of the few in the country in which rabbis from all the respective movements participate. There is a modest fee for the course, but some scholarships are available. If you are interested in the Introduction to Judaism course, please call either Rabbi Rick Rheins or Rabbi Michael Shields at 303-759-1827.

JUNE & JULY 2026

ADULT PROGRAMMING

Pardes Meditation Group
Saturday, June 6 at 8:00 AM

**Temple Sinai's Annual Event:
Hidden Lights of Sinai:**
Temple Sinai's Unsung Heroes
Sunday, June 7 at 5:30 PM

Brotherhood Marksman Club
Tuesday, June 9 at 11:00 AM (offsite)

Temple Sinai's Annual Meeting
Wednesday, June 17 at 5:30 PM (virtual)

Pardes Meditation Group
Saturday, June 20 at 8:00 AM

Temple Sinai Book Group Meeting
Wednesday, June 24 at 11:00 AM

**A Little Verse, A Little Nosh:
A Night with Dr. David Shepard**
Thursday, June 25 at 7:00 PM

**Shared Voices:
An Outdoor Shabbat Circle**
Friday, June 26 at 6:00 PM

Pardes Meditation Group
Saturday, July 4 at 8:00 AM

Brotherhood Marksman Club
Tuesday, July 14 at 11:00 AM (offsite)

Sinai Sisterhood Lunch at NY Deli News
Wednesday, July 15 at 11:30 AM

**Sinai Brotherhood Presents:
Jewish Whiskey vs. Scotch Tasting**
Wednesday, July 15 at 7:00 PM

Pardes Meditation Group
Saturday, July 18 at 8:00 AM

**Sinai Social Smokehouse & Lucky
Number Game Night**
Saturday, July 18 at 6:00 PM

**Brunch with Guest Speaker
Gillian Perry**
Sunday, July 19 at 10:30 AM

**Shared Voices:
An Outdoor Shabbat Circle**
Friday, July 24 at 6:00 PM

MONTHLY PROGRAMS

**Brotherhood, Bible & Beers at
Darcy's Bistro**
Tuesday, June 2 at 6:00 PM
Tuesday, July 7 at 6:00 PM

**Knitting and Crocheting for JOY at
Temple Sinai**
Wednesday, June 17 at 1:00 PM
Wednesday, July 15 at 1:00 PM

**Brotherhood Breakfast at
Morning Story DTC**
Thursday, June 18 at 9:00 AM
Thursday, July 16 at 9:00 AM

WEEKLY PROGRAMS

**Arguments for the Sake of Heaven
with Rabbi Rheins**
Tuesdays at 12:00 PM (virtual)

Lunch & Learn
Thursdays at 12:00 PM
(in-person and virtual)

WORSHIP

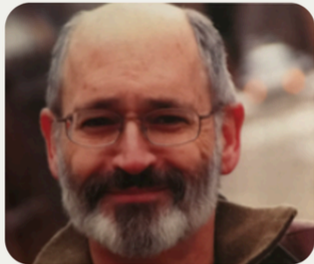
Erev Shabbat
Fridays at 6:00 PM

Shabbat Morning Minyan
Saturdays at 9:00 AM



David Shepard

A Little Verse, A Little Nosh
A Night with Dr. David Shepard



Dr. Shepard is the author of two poetry books: Along the Way and Mortal Man's Journey Toward the Light. His poems span many styles and themes. They explore life, aging and the existential.

A reception will follow the reading.

Dr. Shepard and his family have been Temple Sinai members for more than 40 years.

RSVP HERE

Thursday, June 25 | 7:00 PM | Temple Sinai

Shared Voices

An Outdoor Shabbat Circle

FRIDAY, JUNE 26 AND JULY 24 AT 6:00 PM

Experience a Shabbat service in a fresh musical and soulful way.

This gathering is designed to be *open and inclusive*, whether you sing out loud, hum along or simply take it all in.

If you're a musician, please contact [Rabbi Shields](#) and he can send you the music. No matter your background or musical comfort level, your presence matters. This is Shabbat as a shared creation, *kehilla kedosha*, a sacred community, finding its voice together.

**BRING A BLANKET OR CHAIR, YOUR SPIRIT, AND
IF YOU'D LIKE, BRING YOUR INSTRUMENT.**

Let's welcome Shabbat with song, soul and each other.

SINAI SMOKEHOUSE & LUCKY NUMBER

GAME NIGHT

Saturday, July 18 at 6:00 PM

Join us for a fun-filled evening of mouth-watering BBQ, and classic number games, prizes, and fun! Bring friends, test your luck, and enjoy a lively night out!

\$24 per person

- ◆ BBQ dinner & drinks
- ◆ Great prizes
- ◆ Multiple rounds of play



SIGN UP HERE:



Temple Sinai
Brotherhood Presents:



GUYS NIGHT OUT : JEWISH WHISKEY VS. SCOTTISH SCOTCH



**WEDNESDAY, JULY 15 @ 7:00 PM
AT TEMPLE SINAI**

Temple Sinai and Temple Emanuel come together for an exclusive evening with Brian Dvoret from M&H Distillery (Milk & Honey), Tel Aviv's award-winning Israeli whiskey distillery. You'll have the chance to sample, learn, compare it to Scottish Scotch and even order your favorite bottles.

RSVP HERE

<https://sinaidenver.shulcloud.com/form/brotherhood-tasting-26>



Summertime Family Shabbat & Foam Party

Saturday, August 1
9:30am - 11:30am Temple Sinai Outdoor Pavilion



Featuring Rhythm & Ruach, brunch, and a foam party!
Don't forget your sunscreen, swimsuits, goggles, change of clothes, towels and picnic blankets!

\$18 per family

COZY VIBES. EARLY-NIGHT FUN.

Pajama Party Havdalah

Put on your favorite pajamas, grab your favorite stuffy and join us for a relaxed and cheerful night including Havdalah, Dinner and Smores.

TEMPLE SINAI

SATURDAY, JUNE 27 | 5:00 PM - 7:00 PM

Tents • Activities • Dinner & Refreshments
\$5 per person (members)
Free for 2 and under
\$10 (non members)

REGISTER HERE

Guest Speaker and Brunch GILLIAN PERRY

ANNE FRANK'S LIFE AND SURPRISING GLOBAL LEGACY

FOUNDER AND LONGTIME EXECUTIVE DIRECTOR OF THE ANNE FRANK TRUST UK, THE BRITISH PARTNER ORGANIZATION OF THE ANNE FRANK HOUSE.

SUNDAY, JULY 19

10:30 AM

GENEROUSLY SPONSORED BY JUDY ARONSON AND STEVE KATZ



RSVP HERE



Looking to get involved?
Find more ways here!



Jewish Summer Camp

If you're interested in helping Rabbi Shields encourage camp attendance, we invite you to be part of an energetic and heart-centered group dedicated to helping more of our children experience the magic of Jewish summer camp. Rooted in our values of Kehillah (community) and Torah (learning), this group will work to build awareness, share the transformative impact of camp, and create joyful, creative opportunities to raise funds for our Camp Scholarship Fund. From fun, community-driven events to meaningful storytelling about camp experiences, this effort will help ensure that every Temple Sinai child who wants to go to Jewish camp has the opportunity to do so. Because camp is more than a summer, it's where friendships are formed, Jewish identity comes alive, and lifelong connections begin.

Email Rabbi Shields [here](#).



B'NEI MITZVAH



JONAH WYTE: JUNE 13, 2026

JAKE WAXMAN: JUNE 20, 2026

SAWYER BERNSTEIN: JULY 11, 2026

LEVI TEIRNEY: JULY 18, 2026

JACK BRILL: JULY 25, 2026

IN MEMORIAM

Samantha Anne-Luterman Bernstein, wife of Paul Bernstein, mother of Margo and Rosalie Bernstein, daughter of Joanne and Dr. Arnold Luterman, sister of Josh (Melanie) Luterman

Danny "Dan" Allan Levitt, husband of Jean Levitt, father of David (Elizabeth Lord-Levitt) Levitt and Jeffrey (Elizabeth) Levitt, brother of Jim (Shirley) Levitt, Terri Heywood, and Cindy Levitt, grandfather of Betty, Lucy, and Leighton

Cheryl Marians, wife of the late Robert Marians, mother of Russell (Amy) Marians and Keith (Liza) Marians, grandmother of Hannah, Giselle, and Naomi

Judith Proctor, sister of Ellie (Michael) Kaplan

Byron Shafer, husband of Evelyn Shafer, father of Randy (Lisa) Shafer and Hillery (Bob) Oddo, grandfather of Haley (Luke) Naes, Ashley (Dane) Anderson, Adam Shafer, and Talia (Anthony) Anderson

2026



GRADS



Ethan Boivin

Graduated Endeavor Academy
in December of 2025

Attending Community
College of Aurora



Owen Bub

Graduated from Cherry Creek
High School

Attending University of
Colorado Boulder



Kennedy Hauptert

Graduated from Cherry Creek
High School 4 year Honor
Student with 4 years Academic
Letters 3 year Diving Letters

Attending Ohio University



Lucinda Leviton

Graduated from Chief Stealth
International High School, West
Seattle, WA

Attending Washington State
University



Lucy Margolin

Individual Studies Graduate

Attending Colorado State University



Aaron Schiff

Graduated from Wichita State
University

Future plans: work in the sports
industry



Madeline Shaw

Graduated from Overland High
School

Attending CSU Fort Collins, majoring
in Health and Exercise Science with a
concentration in Pre-Nursing



Josh Thorner

Graduated from University of
Colorado Boulder Leeds Business
School

Future plans: Working as an analyst
for Sunwest Bank



Scott Weiner

Graduated from Cherry Creek
High School

Attending University of Colorado
Boulder

BOOST YOUR CONNECTIONS THROUGH SCHOLARSHIPS AND JEWISH OPPORTUNITIES!

WHETHER IT'S FOR SUMMER CAMP, STUDIES, A LIFECYCLE EVENT OR TRAVEL, THERE ARE SO MANY WAYS THAT YOU CAN BE AWARDED AN EXTRA BOOST OF ENCOURAGEMENT TO FULFILL YOUR PERSONAL OR FAMILY'S GOALS.

TEMPLE SINAI IS FORTUNATE TO HAVE FAMILIES AND RESOURCES WHO HAVE DESIGNATED MONETARY FUNDS FOR THAT EXTRA "BOOST." THESE FUNDS WERE ESTABLISHED FOR A VARIETY OF REASONS BUT THEY ALL HAVE THE SAME COMMON PURPOSE - **TO HELP JEWISH HOUSEHOLDS KEEP THEIR JEWISH SPIRIT ALIVE!**

THESE SPECIAL OPPORTUNITIES ARE TO BE USED; IT FILLS THE HEARTS AND SOULS FOR EVERYONE WHEN SCHOLARSHIPS AND OPPORTUNITIES ARE AWARDED. EXPRESS YOUR INTEREST AND MAKE THE MOST OF YOUR JEWISH JOURNEY!

ALLAN AND HELENA STRIKER SCHOLARSHIP FUND

Temple Sinai is honored to offer a new scholarship, the Allan and Helena Striker Scholarship Fund. This is a needs-based scholarship generously funded for the purpose of supporting academically strong young men completing their senior year of high school and attending college the following year. The scholarship amount is \$2,500.

THE JEFFREY O. ROSENBERG MEMORIAL SCHOLARSHIP

The Jeffrey O. Rosenberg Memorial Scholarship for Jewish Studies was created by his family to honor his memory and to sustain his passion for Jewish scholarship and culture. Each year this scholarship will support:

- 1) Textbooks and course materials for Temple Sinai members enrolled in higher education Jewish study courses and rabbinic studies. Distributes up to \$500 each year to one or multiple students. The applicant should write a letter describing their Jewish studies course(s) and the course materials they would like covered.
- 2) B'nei Mitzvah tutoring for families: Provides a student with \$500 each for B'nei Mitzvah tutoring.



i LEARN MORE AND APPLY AT:
SINAIDENVER.ORG/WHAT-WE-DO/SCHOLARSHIPS

✉ LISA THORNER, EXECUTIVE DIRECTOR:
LISA@SINAIDENVER.ORG

**ALAN FARBER MEMORIAL
CAMP SCHOLARSHIP FUND**

IN LOVING MEMORY OF:

Les Davidson and Nathan
Oderberg

John & Lori Spanbauer

IN HONOR OF:

Lori Spanbauer

Wendy Vean

**BROTHERHOOD FUND
IN LOVING MEMORY OF:**

Beverly Sunshine

Terry Snyder

**CANTORIAL FUND
IN LOVING MEMORY OF:**

Franklin Kromsky and Ed Pepper

Richard & Barbara Finke

**DORON ABOSCH MEMORIAL
FUND**

IN LOVING MEMORY OF:

Beverly Sunshine

Brad & Lisa Freedberg

**IDA & MAX FOGEL WINDOWS
OF THE WORLD FUND**

IN LOVING MEMORY OF:

Ed Pepper

The Rittenberg Family

**ILENE SHIROFF MEMORIAL
FUND**

IN LOVING MEMORY OF:

Loretta Cawelti

Kenneth & Shauna Levinson

Shirley Vean

Wendy Vean

**JEWISH EDUCATION FUND
IN LOVING MEMORY OF:**

Herb Davis

Jan & Linda Dorfman

Lorraine Dreiblatt and Ed Pepper

Alan & Anita Eisenberg

**Jewish Interest Free Loan Fund
DONORS:**

Robert Davidson & Shellie

Specter

**JULIUS & HELEN RING IST FUND
IN LOVING MEMORY OF:**

Arnold Berkman and Florianne

Solin

Jean Guthery

Ed Pepper

Jean Guthery

Melvyn & Roberta Klein

Stephen & Sherri Weinstein

Muriel Klein Rabstein and

Beverly Sunshine

Melvyn & Roberta Klein

Eugene Roth

Justin & Sharon Roth

IN HONOR OF:

Birth of Ari Phillip Figa

Helene Hoffman

**MARILYN TOBIN MEMORIAL
FLOWER FUND**

IN LOVING MEMORY OF:

Frances Gotlieb

Jerome & Dorothy Gotlieb

**OSI & SELMA SLADEK
CULTURAL ARTS / MUSIC FUND
IN LOVING MEMORY OF:**

Sally Birman

Kim Nevins

DONORS:

Gary & Barbara Hoffman

**PRAYER BOOK FUND
IN LOVING MEMORY OF:**

Esther Nahmouli

The Shaner Family

**PRESCHOOL UNDERWRITING
FUND**

IN HONOR OF:

Debbie and Joe Pobiel

Wesley & Sheryl Schochet

Temple Sinai Preschool Teachers

Donald & Marilyn Weinhouse

**RABBI MICHAEL SHIELDS
DISCRETIONARY FUND**

IN LOVING MEMORY OF:

Kathy Elbinger Grazi

Barbara Glassman

**RABBI RICHARD RHEINS
DISCRETIONARY FUND
IN LOVING MEMORY OF:**

Moe Aaron, Barbara Altman, and

Hilda Ross

Mike Ross and Family

Dr. Arthur Cohen

Arnold & Joanne Luterman

Janet Frank

Noreen Stillman

Kathy Elbinger Grazi

Michael Grazi

Jan & Linda Dorfman

Andrew Kane and Laura Ann

Lassow

Gerald & Natalie Lassow

Pearle Rae Levey

Ken & Barbara Laff

Shirley Lewensohn

Barbara Glassman

Ed Pepper

Duke & Sandy Kaminsky

Fred & Lois Margolin

Edward & Debby Rosenfeld

Ron & Janet Shiroff

Morey & Ellen Susman

Dick & Naomi Wisott

Milton Rich

Daniel & Susan Rich

Kenneth Robins

Judy Robins

Florianne Solin

Helene Hoffman

Beverly Sunshine

Michael Ross

Charles & Gaylyn White

Estelle Waller

Alicia Smith

IN HONOR OF:

Grace Bach and Cheryl Simon for speedy recoveries to health
 Gerald & Natalie Lassow
 Celine Kahn's 7th Birthday and Leon Smith's 83rd Birthday
 Dorothy Resnick
 Rabbis Rick and Susan Rheins
 Michael Grazi

RABBI ZWERIN

DISCRETIONARY FUND

IN LOVING MEMORY OF:

Jan Golden, Betty Joblove, and Louis Joblove
 Ben & Dee Trasen
 Hyman Heller
 Joel & Elaine Goldstein
 Beverly Sunshine
 David & Marilyn Flemming

RELIGIOUS SCHOOL FUND

IN LOVING MEMORY OF:

Allen Freedberg
 Grace Bach and Family

SISTERHOOD FUND

IN LOVING MEMORY OF:

Norma Kitchin
 Steve & Nancy Letman

TEACHER EDUCATION FUND

IN LOVING MEMORY OF:

Hyman Wright
 Alan & Anita Eisenberg

TEMPLE SINAI GENERAL FUND

IN LOVING MEMORY OF:

Susan Bomar and Donald S. Walter, Jr.
 Mark & Deedee Shulman
 Bill Branowitz
 Herbert & Elaine Hoffman
 Marie Brody
 Donna Lederman
 Bob Cohn
 Michael & Geegee Brunschwig
 Rena Defez
 Jack Defez
 Bessie Dvosin
 Marc & Laurie Sorkin

Harriet Feld
 Jodie Feld-Levin
 Elizabeth "Betty" Heselson and Neil Heselson
 Bennie & Joan Bub
 Ed Pepper
 Judy Kippur
 Larry & Shirlee Londer
 Jerry Lee Pitter and Gene Plattner
 Charlene Spiegelman
 Marlene and Norman Polman
 Larry & Barbara Polman
 Ruth Rashti
 Robert & Margaret Rashti
 Morton Smith
 Rick Smith
 Beverly Sunshine
 Anonymous
 Kristi Dinner
 WSP Government Affairs Team

IN HONOR OF:

Israel Support
 Larry & Sheryl Gray
 Margot Manuel
 Gregory Manuel

DONORS:

Marian Lauterbach
 Stacy Pocrass & Terri Tilliss

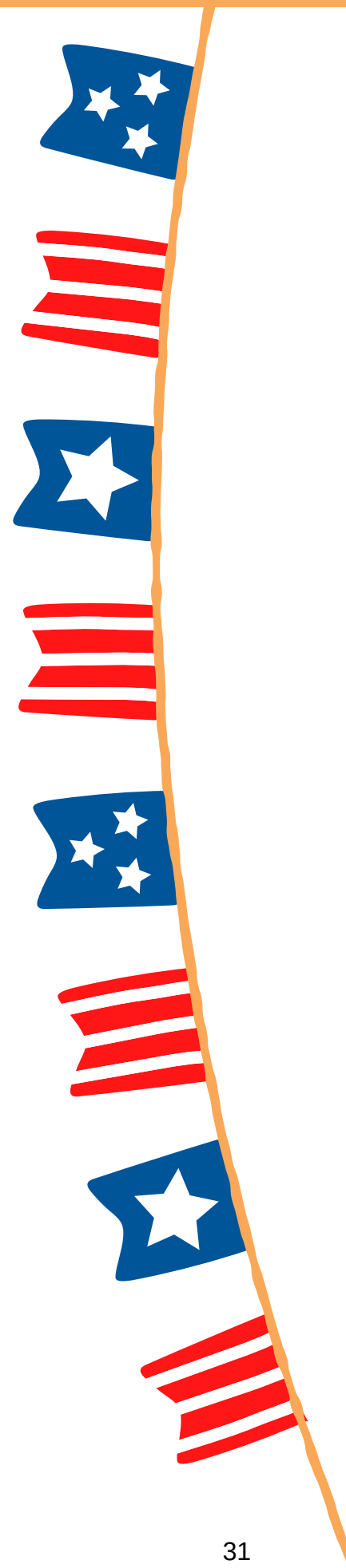
WE CARE/SOCIAL ACTION FUND

IN LOVING MEMORY OF:

Neale DeYoung, Ida Lassow, and Felice Tarter
 Gerald & Natalie Lassow

IN HONOR OF:

Jim and Mimi Barnard's Anniversary
 Grace Bach



STAFF AND BOARD

SINAI STAFF:

RICHARD RHEINS

Senior Rabbi
ext. 205
rabrheins@sinaidenver.org

MICHAEL SHIELDS

Associate Rabbi
ext. 204
rabbishields@sinaidenver.org

RUTHIE LIPSHULCH

Cantorial Soloist
ext. 208
ruthie@sinaidenver.org

RAYMOND ZWERIN

Rabbi Emeritus
ext. 217

LISA THORNER

Executive Director
ext. 206
lisa@sinaidenver.org

MONA SPITZ

Director of Development
ext. 207
mona@sinaidenver.org

LAUREN MIELZINER

Director of Business Operations
ext. 211
lauren@sinaidenver.org

DEBBIE FOSTER

Director of Engagement &
Programming
ext. 203
debbie@sinaidenver.org

JESSICA WOLF

Operations Manager
ext. 201
jessica@sinaidenver.org

BRYNN TULLY

Youth Engagement Director/
Family Programming Assistant
brynn@sinaidenver.org

KELSEY OLIVER

Office Manager
ext. 200
kelsey@sinaidenver.org

LINDSEY BALTIMORE

Marketing Manager
ext. 210
lindsey@sinaidenver.org

WENDY APPLEBAUM

Administrative Assistant
ext. 209
wendyg@sinaidenver.org

SHEILA PURDIN

Director of Early Childhood Education
303.759.0755 ext. 101
sheila@sinaidenver.org

RACHEL CRAM

Preschool Assistant Director
303.759.0755 ext. 102
rachelc@sinaidenver.org

LOGAN WILLIAMS

Preschool Operations Manager
303.759.0755 ext. 100
logan@sinaidenver.org



EXECUTIVE COMMITTEE:

President - **STEPHANIE PODOLAK**

Vice President - **ROB EBER**

Vice President - **KATHY ZEIGER**

Vice President - **MARSHALL TOBIN**

Treasurer - **PHYLLIS BABICH**

Secretary - **ANA KOSER**

Past President - **DAVID EISNER**

TRUSTEES:

JEANETTE AMAYO

AL BLUM

AMANDA BROOKS

REID GOODMAN

JEAN GUTHERY

REBECCA HEA-WILSON

JERRY LASSOW

ADAM MELNICK

RACHAEL NARCISI

TAMARA SIEGEL

JOHN SPANBAUER

JIM STONE

MELANIE WISEMAN

EMILY YATES

KEEP UP WITH TEMPLE SINAI



3509 S. GLENCOE ST., DENVER, CO 80237



303.759.1827



SINAIDENVER.ORG



MAIL@SINAIDENVER.ORG



facebook.com/TempleSinai

facebook.com/SinaiDenverRS

facebook.com/TempleSinaiPreSchoolDenver

